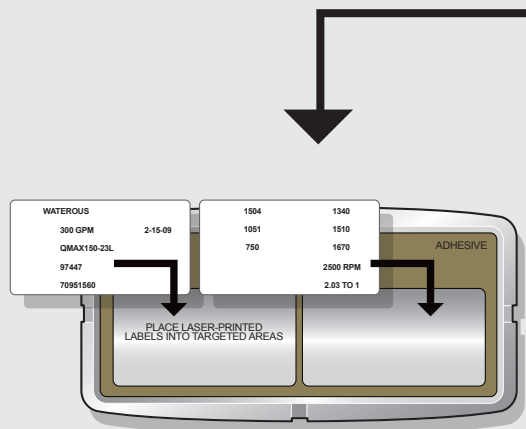


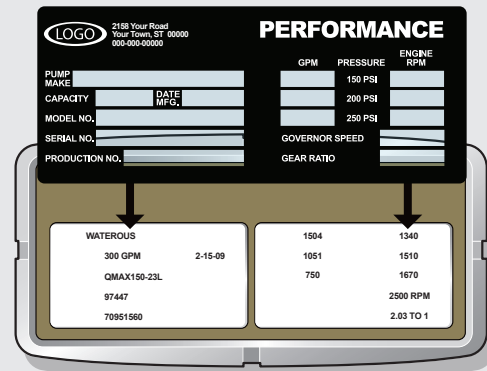
You will start with a blank white peel-off label sheet, a standard plastic overlay with clear windows, and a bezel with a selective adhesive layer applied.

Innovative Controls provides you with a PDF that contains all of the blank text boxes for you to fill in the relevant data.

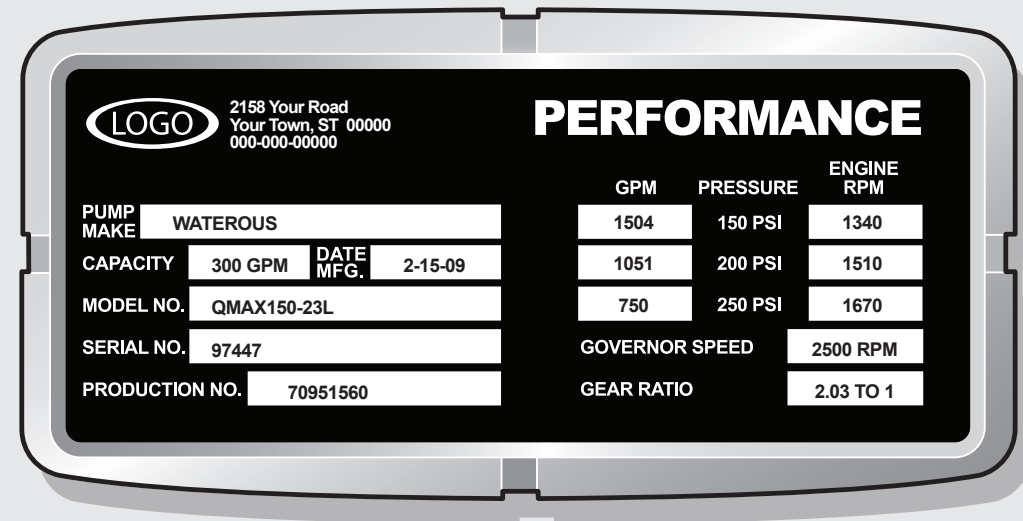
After filling in the desired text boxes, you run the blank white label sheet through the printer.



Place the white labels in the bezel with selective adhesive layer.



Peel back the selective adhesive layer and place the plastic overlay with clear windows down. The exposed clear adhesive should immediately bond with the overlay.



The finished product should look similar to this. You may run into alignment issues if it is the first time using a new printer. Please contact Innovative Controls to work with one of our graphic designers on resetting the pdf.